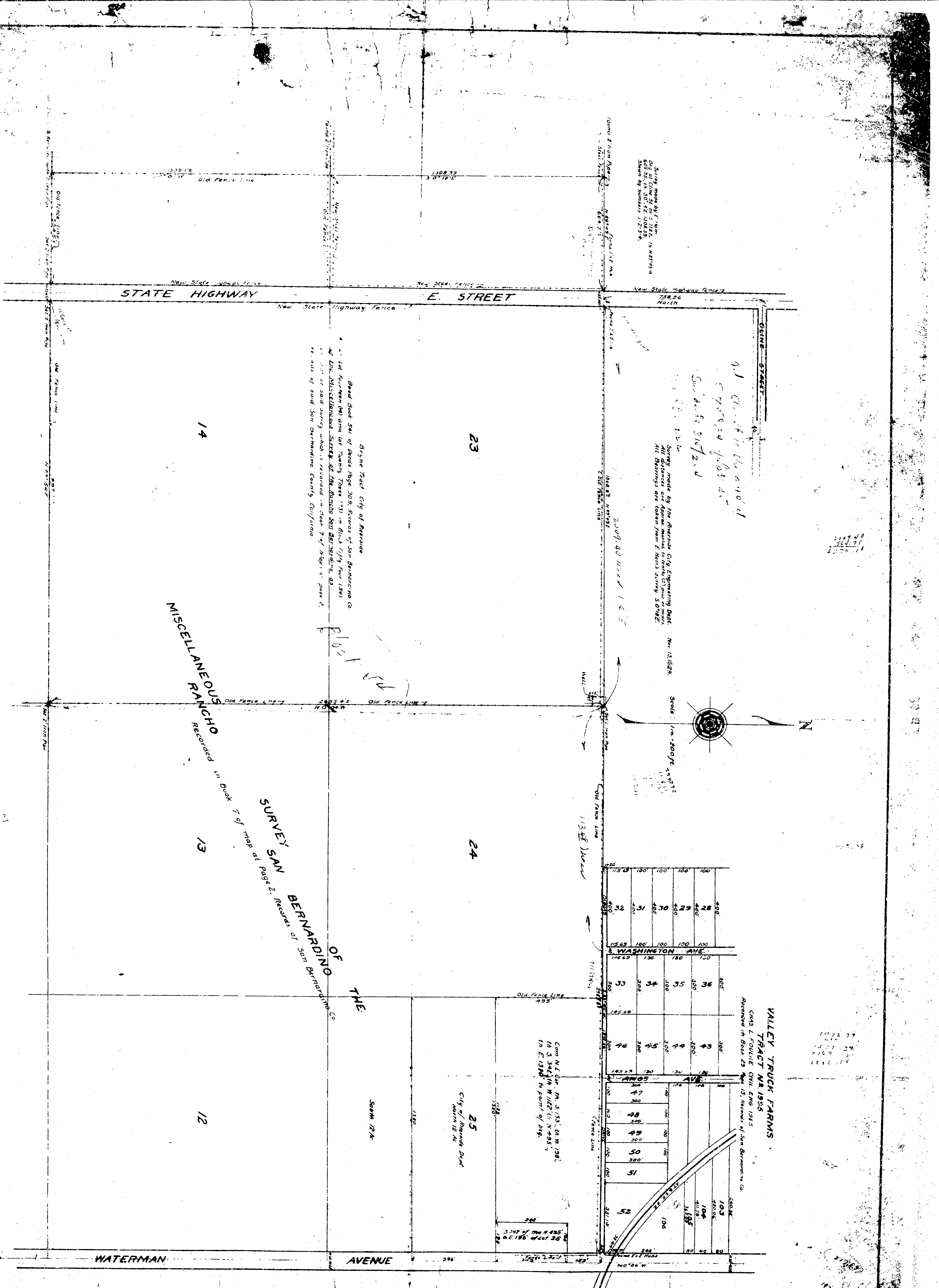


VALLEY TRUCK FARMS  
 TRACT No. 1925  
 CHAS. L. FOLLIE CIVIL ENG. 1925  
 Approved in Book 23 of Records of San Bernardino Co.

101	102	103	104	105	106	107	108	109	110	111	112	113	114	115	116	117	118	119	120
400	400	400	400	400	400	400	400	400	400	400	400	400	400	400	400	400	400	400	400
100	100	100	100	100	100	100	100	100	100	100	100	100	100	100	100	100	100	100	100
100	100	100	100	100	100	100	100	100	100	100	100	100	100	100	100	100	100	100	100

WASHINGTON AVENUE  
 113 ft. 1/2" wide

Comp. N.E. 1/4 of Sec. 18, T. 131. N., R. 106. W.  
 in E. 1388, in proof of 1925.



VALLEY TRUCK FARMS  
 TRACT No. 1925  
 C.M.S. L. FOLLIE CIVIL ENG. 1925  
 Approved in Book 23 of Records of San Bernardino Co.

101	102	103	104	105	106	107	108	109	110	111	112	113	114	115	116	117	118	119	120
400	400	400	400	400	400	400	400	400	400	400	400	400	400	400	400	400	400	400	400
100	100	100	100	100	100	100	100	100	100	100	100	100	100	100	100	100	100	100	100
100	100	100	100	100	100	100	100	100	100	100	100	100	100	100	100	100	100	100	100

5742 of the R. 435  
 S.E. 1/4 of 34